

TAHARA

Model : MSD-C66A/74L-A(C1)

6-layer 6-kind of resin (Double station / 1 parison)

Extruder

Screw Diameter	mm	80	70	55	35	35	35
Screw L/D		28	28	28	26	26	26

Clamping Unit

Max Mold size	Width	mm	740
	Height	mm	415
	Thickness	mm	200 x 2
Mold opening stroke		mm	300
Clamping Force		kN	200
Dry Cycle		sec	3.9
Pitch	1 parison	mm	-

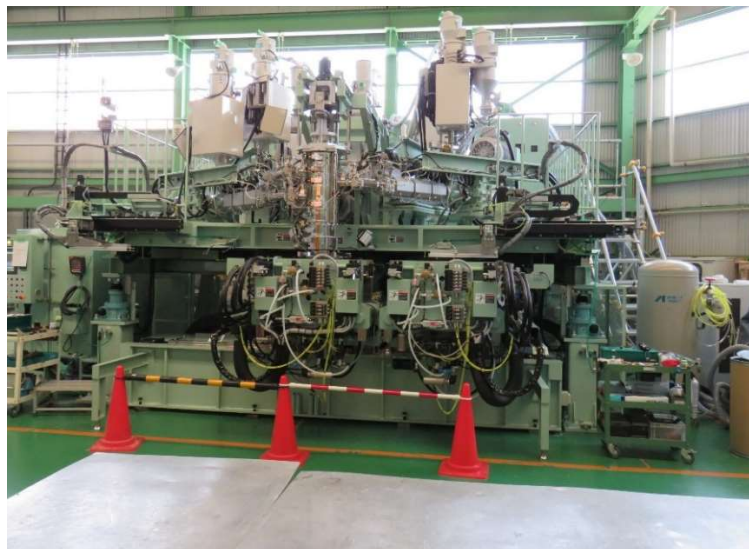
Machine Diameter

Width	mm	7,200
Depth	mm	5,760
Height	mm	3,790

Energy Consumption

Mold Cooling	L/min	55
Air Consumption	NI/min	1,000~2,000

Consumption will vary depending on the conditions of the flash cooling air and blowing air.



This machine is an example.

We'll offer the most suitable blow molding machine according to your request like shape and size of the machine, resin, layer composition and necessary production amount.